



23 NAVARRE ROAD LONDON, E6 3AQ

£525,000
FREEHOLD

We are pleased to offer this fantastic four bedroom period house in this quiet street. The property includes a large through lounge leading on to a spacious kitchen diner, four good sized bedrooms and a three piece bathroom. The property also benefits from a rear garden, a large cellar and gas central heating. Set over 1453 sq ft this property has so much potential.

DouglasPryce

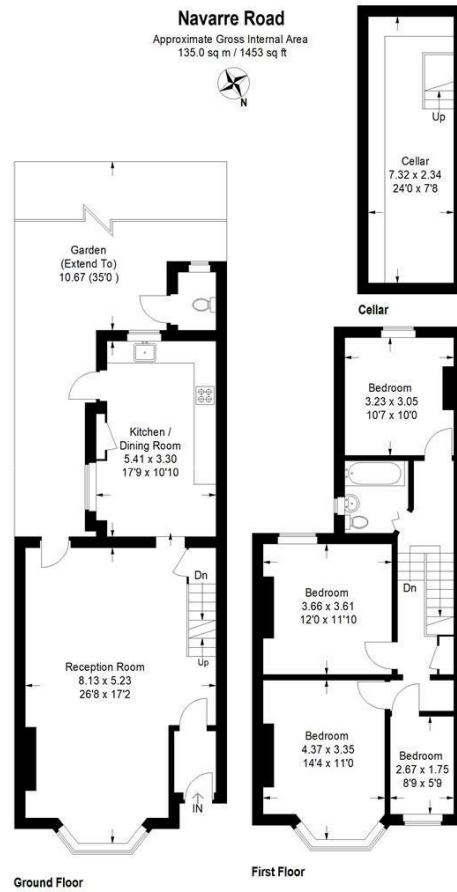
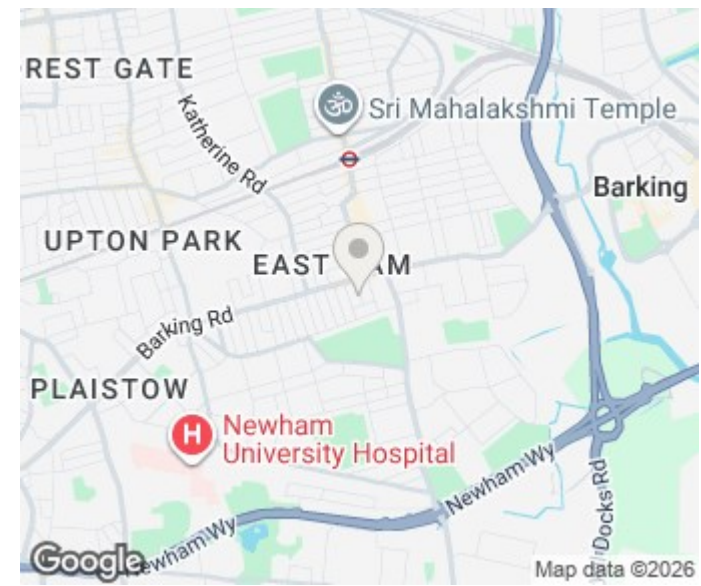


Illustration for identification purposes only,
measurements are approximate.



Energy Efficiency Rating		Current	Potential
Very energy efficient - lower running costs			
(92 plus) A			
(81-91) B			
(69-80) C			
(55-68) D			
(39-54) E			
(21-38) F			
(1-20) G			
Not energy efficient - higher running costs			
England & Wales		EU Directive 2002/91/EC	

Agents Note: Whilst every care has been taken to prepare these particulars, they are for guidance purposes only. All measurements are approximate and are for general guidance purposes only and whilst every care has been taken to ensure their accuracy, they should not be relied upon and potential buyers/tenants are advised to recheck the measurements

Sales
Verdant Lane
London
SE6 1LF

07887933642
glenn@douglaspryce.co.uk
www.douglaspryce.co.uk

DouglasPryce